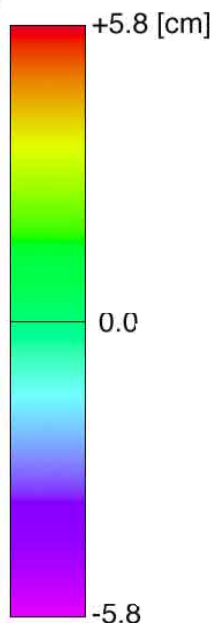
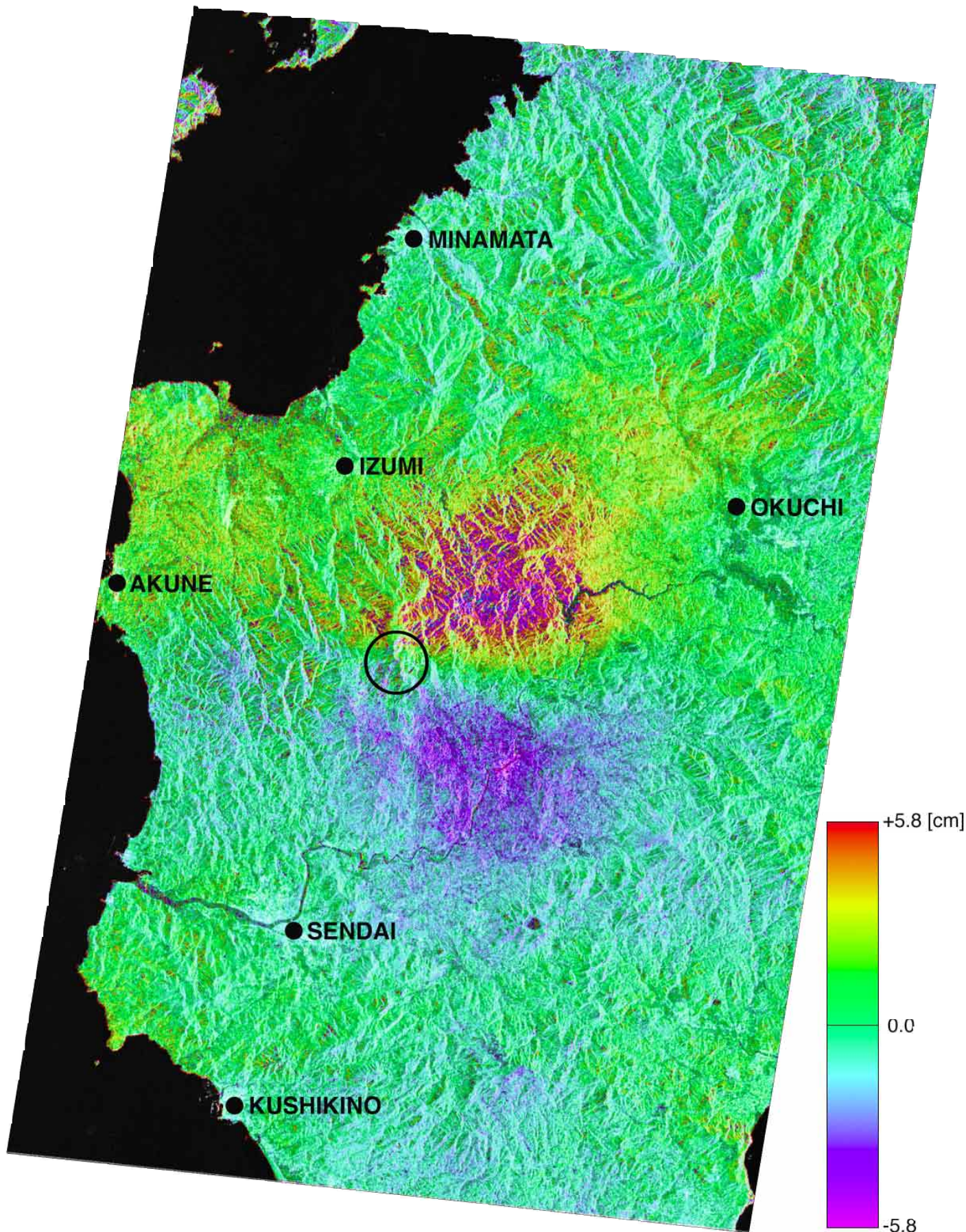


NW Kagoshima Prefecture Earthquake(Differential Interferogram)



NW Kagoshima Prefecture Earthquake(Differential Interferogram)

This shows the crustal movement caused by the NW Kagoshima Prefecture Earthquake (M6.3) on March 26, 1997.

We used data collected on March 2, 1997 and April 15, 1997 by JERS-1 SAR and processed the data with a technique for quantifying crustal movement due to the earthquake. Each color in this image corresponds to a different type of movement; purple means movement towards the satellite and orange means movement away from the satellite.

These outcomes agree with the crustal movements obtained from a field survey.

Observation data from JERS-1 SAR thus make it possible to quantitatively measure crustal movements due to earthquakes and volcanic actions.

