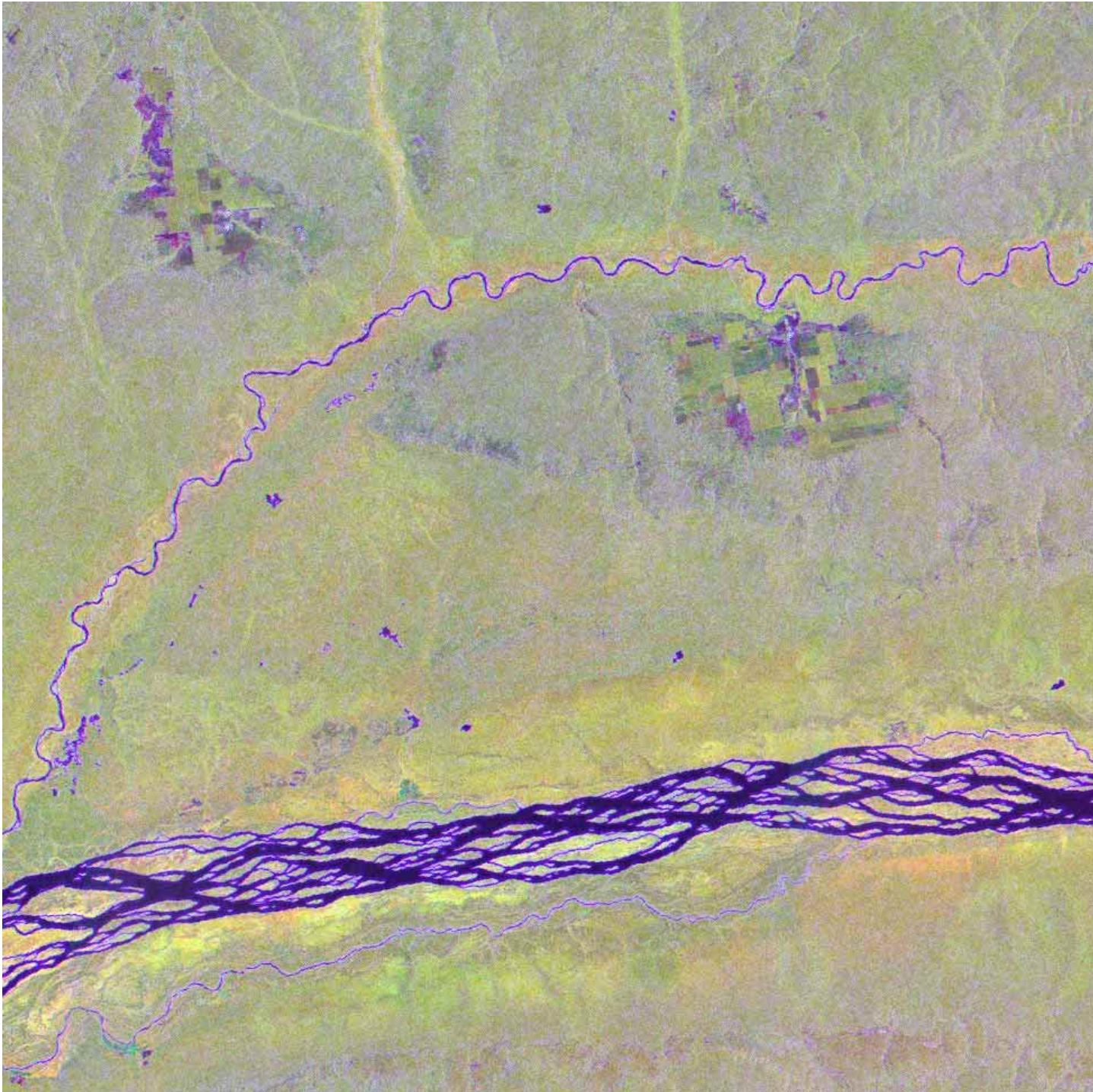


Multi-temporal JERS-1 SAR Image of the Congo River in the Central Africa



Multi-temporal JERS-1 SAR Image of the Congo River in the Central Africa

Image mosaic created from JERS-1 radar imagery.

Resolution of this particular mosaic image: 100 meters / image pixel.

This area is dominated by tropical forests, which appear yellow / green in the image.

Human settlements and activities - apparently forest plantations - appear as rectangular features along the smaller Mongala river. Young forest stands appear dark green, while older stands appear light green. The difference in texture (roughness) between natural forest (rough) and planted forest (smooth) is obvious, and caused by the homogeneity of the plantations in terms of species and age.

Color representation:

Red band: Radar amplitude - November 1996

Green band: Radar amplitude - February 1996

Red band: Radar texture - February 1996

